



**World Health
Organization**

African Region

MENINGITIS

**WHO AFRO Report
Updates: April 2025**



Distribution list

This report is posted on the WHO AFRO VPD data portal (<https://dataportal.afro.who.int/vpd?topic=Provisional-meningitis-data&location=>) and distributed by email on a monthly basis.

To join the distribution list, please send an email to PPH team (pph@who.int)

Acknowledgment

We sincerely thank PPH data analytic team and VPD team

Technical team

MUIANGA, João, muiangaj@who.int – Data Scientist
BITA, abita@who.int – Surveillance Focal Point - Meningitis
BUKHARI, Arish, ukharim@who.int – Business Intelligence Analyst
SHEY UMARU WIYSONGE, Charles - VPD Team Lead

Contributors

Dr. FARHAM, Bridget – Scientist
Ms. STHRESHLEY, Lisa – Strategic Support Officer
Dr. ALEGANA, Victor – Geoscience Expert
Mr. KUBENGA BANZA, Steve – Data Manager
Dr. NGOM, Roland – GIS and Data Scientist
Dr. MBOUSSOU Frank Fortune – Epi Surveillance
Dr. KAZEMBE, Lawrence – PPH Programme Lead
Mr. MOSSOUNGOU, Alden – Graphic Designer

Dr. IMPOUMA, Benido – Director of Communicable and Non-communicable Disease Cluster

And all admin and data management colleagues who contributed to these efforts.

Disclaimer

Please note that all data contained within is provisional. The number of cases of meningitis officially reported by a member state is only available every week of each year (through the WHO AFRO weekly data collection exercise). If any numbers from this provisional data are quoted, they should be properly sourced with a date (i.e. "provisional data based on weekly data reported to WHO AFRO as of March 2025"). For official data from 2023-2025, please visit our website, <https://dataportal.afro.who.int/>

Data sources and limitations

Please note that all data contained within is provisional. The number of cases of meningitis officially reported by a member state is only available every month of each year (through the WHO AFRO monthly data collection exercise). If any numbers from this provisional data are quoted, they should be properly sourced with a date (i.e. "provisional data based on monthly data reported to WHO AFRO as of March 2025"). For official data from 1980-2023, please visit our website.

KEY FACTS

- Epidemic meningitis is a major public health challenge in the African 'meningitis belt', an area that extends from Senegal to Ethiopia with an estimated total population of 500 million.
- Since 2002, the World Health Organization (WHO), in collaboration with its collaborating centres for meningitis, has progressively supported countries in implementing a strategy of ES for meningitis.
- The strategy is the recommended standard for all countries of the Belt and it is now actively being implemented at different levels in all countries.
- Timely containment and adequate case management of epidemics depend on accurate diagnosis of the disease and laboratory confirmation of the causal organism.
- Enhanced epidemiologic and laboratory surveillance enable early detection of epidemics, identification of the serogroup responsible and the use of the appropriate vaccine to protect the population, thus preventing further spread of the disease, deaths or disabilities.
- Lessons learned from the implementation of enhanced surveillance highlight that putting in place adequate laboratory reagents, equipment and materials, training of health personnel as well as clear operating procedures are critical for the containment of meningitis epidemics.

AFRO-Meningitis / attack rate per 100,000

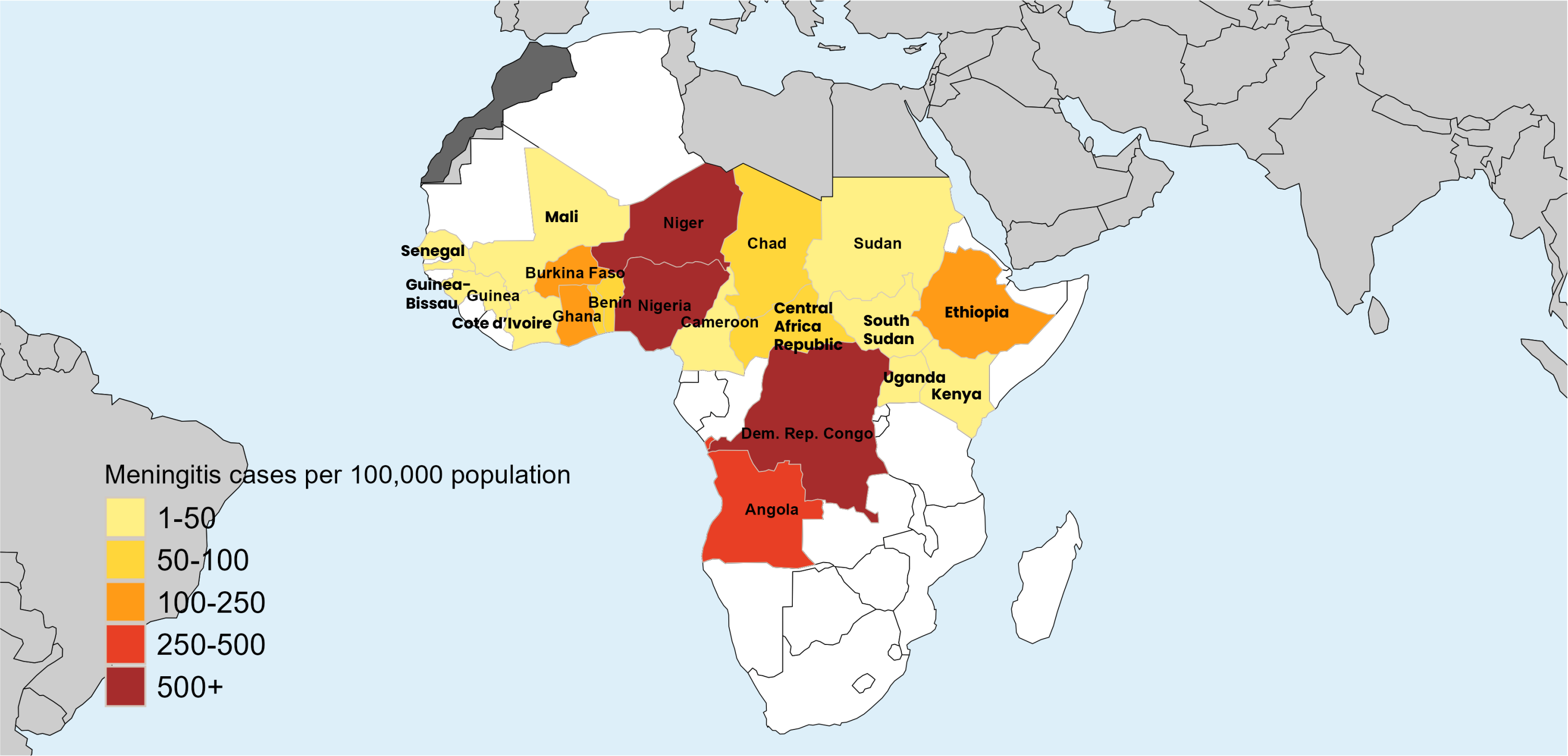
1 January 2024 to 23 March 2025

6 380 Cases reported from 1st Jan 2024 to 23rd Mar 2025

1 718 Deaths reported from 1st Jan 2024 to 23rd Mar 2025

20 Countries officially Reporting cases from 1st Jan 2024 to 23rd Mar 2025

3 WHO AFRO Region: CA, ESA and WA



The designations employed and the presentation of the material in this publication do not imply the expression of any opinion whatsoever on the part of WHO concerning the legal status of any country, territory, city or area or of its authorities, or concerning the delimitation of its frontiers or boundaries. Dotted and dashed lines on maps represent approximate borderlines for which there may not yet be full agreement.

*Reporting period differs by country
Data source: WHO African region
Map Production: WHO AFRO/ UCN/PPH
Map Date: 15 March 2025

3000 km



AFRO-Meningitis / attack rate per 100,000 in 2025

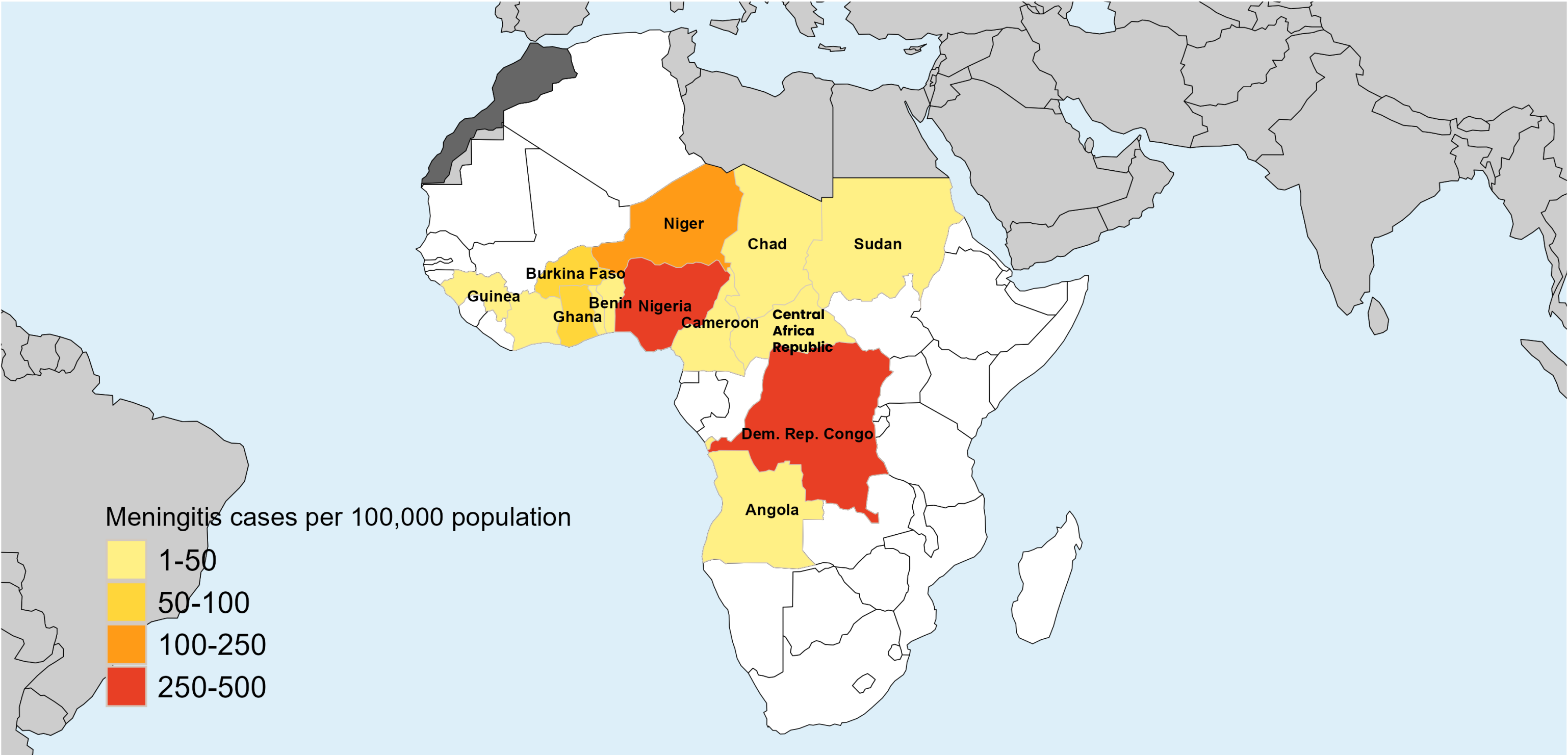
1 January to 23 March 2025

1 232 Cases reported in 2025

339 Deaths reported in 2025

14 Countries officially Reporting cases in 2025

2 WHO AFRO region Central & West Region



The designations employed and the presentation of the material in this publication do not imply the expression of any opinion whatsoever on the part of WHO concerning the legal status of any country, territory, city or area or of its authorities, or concerning the delimitation of its frontiers or boundaries. Dotted and dashed lines on maps represent approximate borderlines for which there may not yet be full agreement.

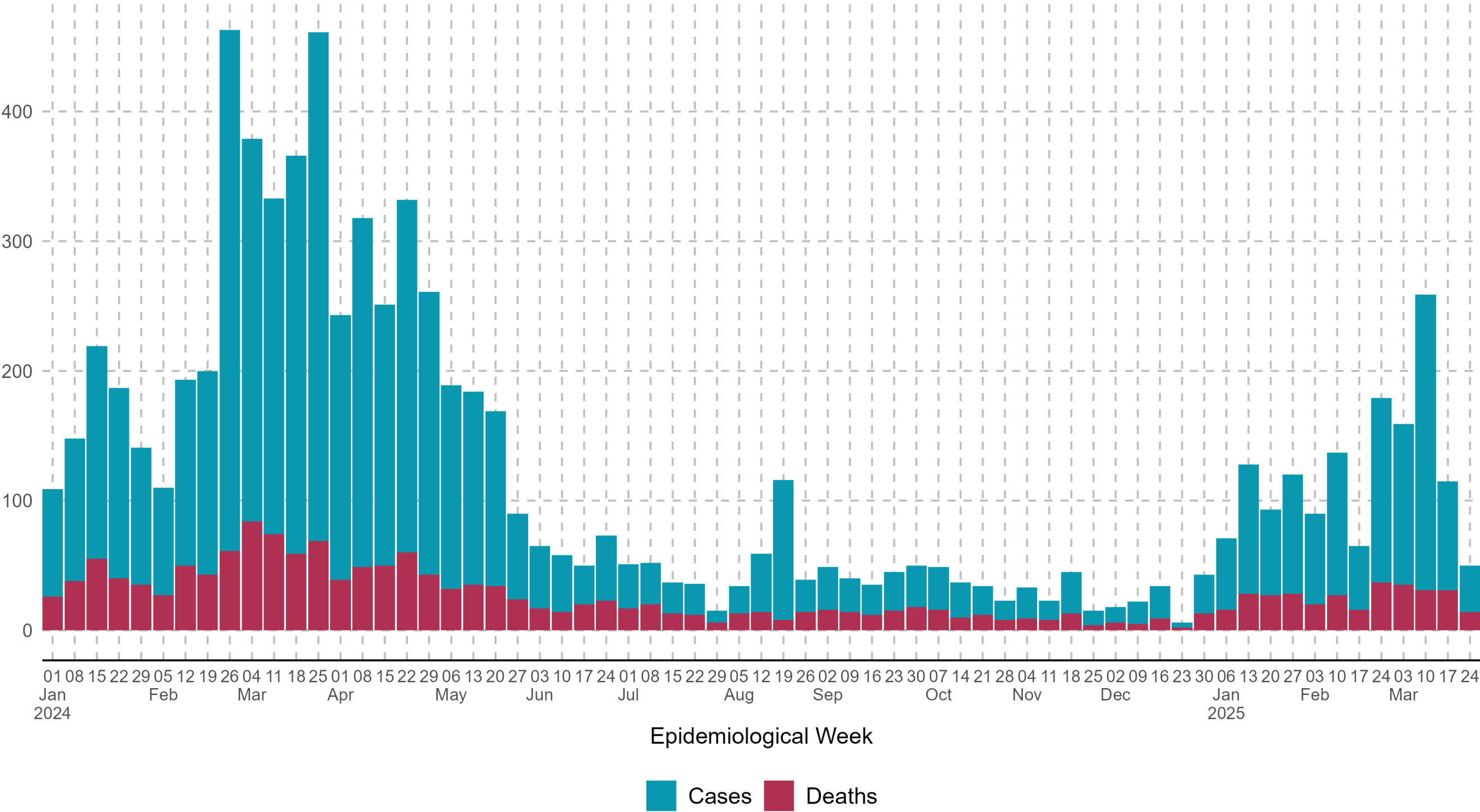
*Reporting period differs by country
Data source: WHO African region
Map Production: WHO AFRO/ UCN/PPH
Map Date: 15 March 2025

3000 km

Regional and Sub-Region Weekly Epicurve of Meningitis cases.

1 January 2024 to 23 March 2025

Number of Meningitis cases and deaths in AFRO Region as of 2025-03-24

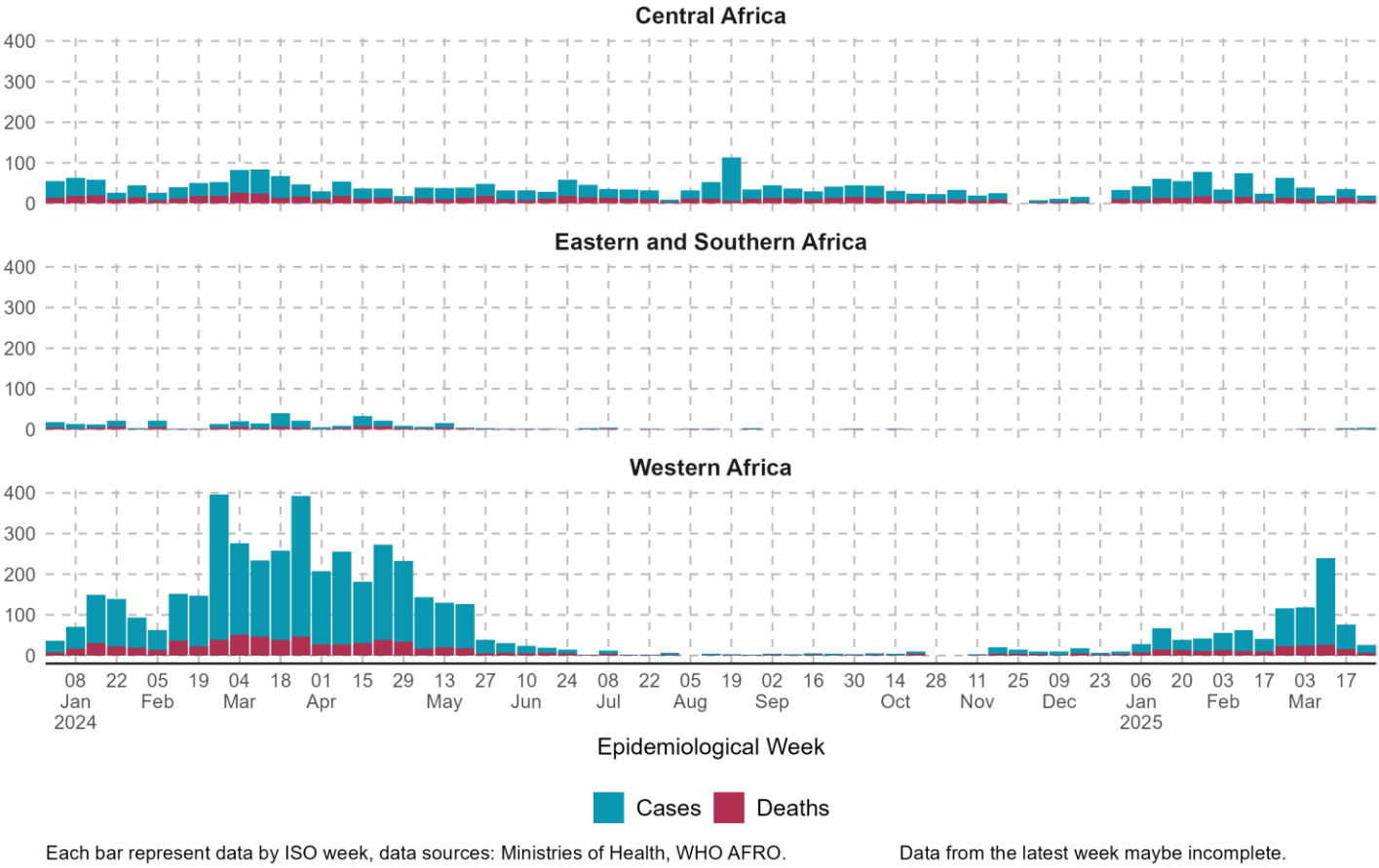


Each bar represent data by ISO week, data sources: Ministries of Health, WHO AFRO. Data from the latest week maybe incomplete.



On week 12 of 2025, 20 out of 25 countries shared their meningitis epidemiological data. One (1) district crossed the epidemic threshold in Nigeria and ten (10) districts crossed the alert threshold in 8 countries: Benin (1), Burkina Faso (1), Central African Republic (1), Gambia (1), Mali (2), Niger (1), DR Congo (2) and Togo (1)

Number of Meningitis cases and deaths in AFRO Sub-Region as of 2025-03-24



Regional Meningitis Situation: Key Indicators and Trends as of 23 March

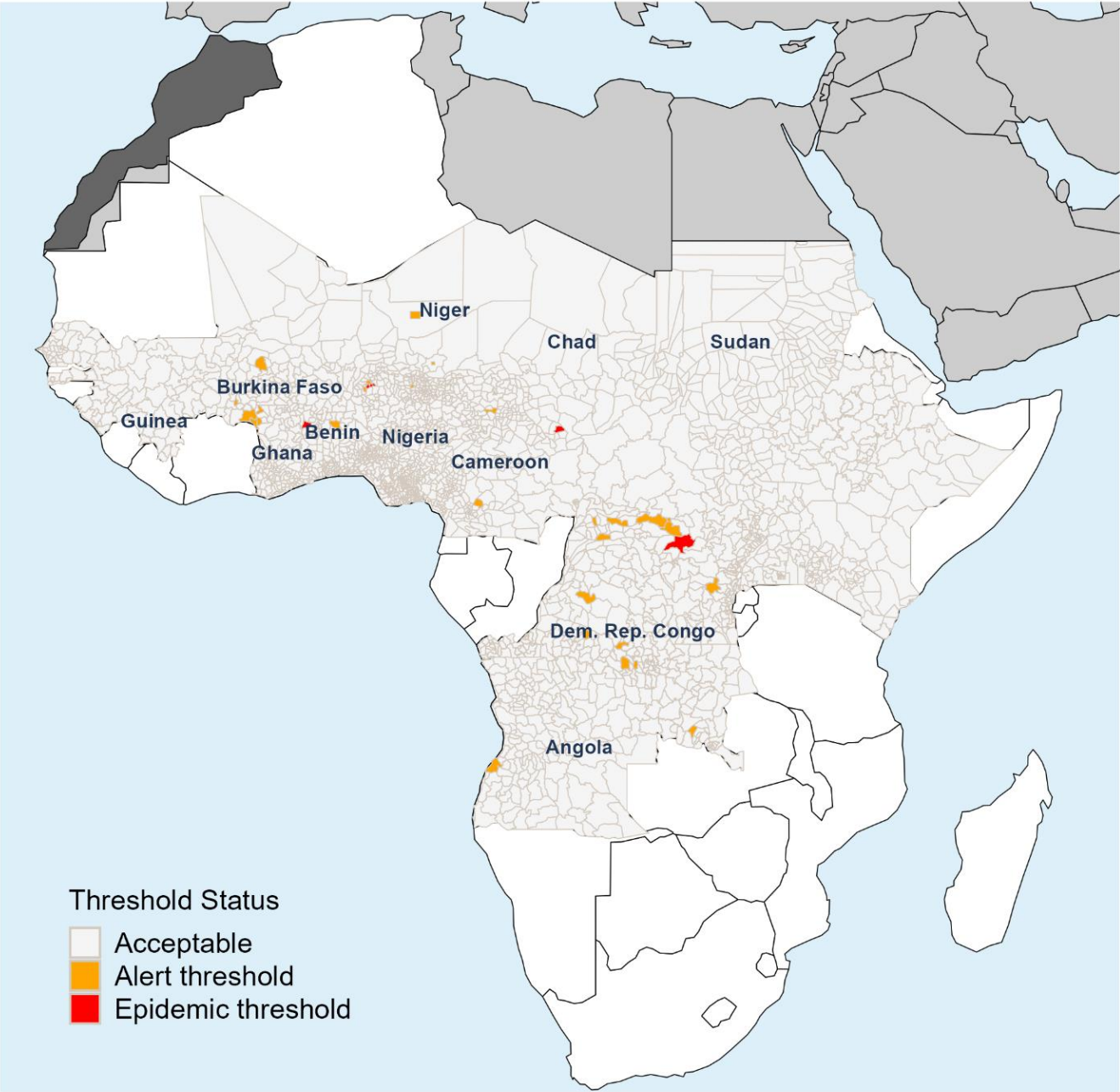
Among countries with reported cases from 1 January 2024 to 23 March 2025

WHO Region	Country	First date	Last date	Cases (cumulative)	Deaths (cumulative)	CFR(%) (cumulative)	Cases (28 days)	Deaths (28 days)	CFR(%) (28 days)	Cases (7 days)	Deaths (7 days)	Weekly cases (%) change	Weekly deaths (%) change
CA	Angola	2024-01-01	2025-03-24	263	122	46.4	7	5	71.4	1	1	-0.7	-0.5
CA	Cameroon	2024-01-01	2025-03-24	22	17	77.3	1	1	100.0	1	1	0.0	0.0
CA	Central African Republic	2024-01-01	2025-02-24	86	36	41.9	24	6	25.0	12	3	0.0	0.0
CA	Chad	2024-01-01	2025-03-17	94	34	36.2	7	2	28.6	6	1	-0.1	-0.5
CA	Democratic Republic of the Congo	2024-01-01	2025-03-24	1,366	554	40.6	64	28	43.8	11	5	-0.6	-0.7
ESA	Ethiopia	2024-01-01	2024-04-29	153	41	26.8	32	7	21.9	4	1	-0.6	-0.5
ESA	Kenya	2024-01-22	2024-10-14	7	6	85.7	2	2	100.0	1	1	0.0	0.0
ESA	South Sudan	2024-01-29	2024-08-12	39	26	66.7	2	2	100.0	1	1	-0.5	-0.5
ESA	Sudan	2024-02-12	2025-03-24	40	23	57.5	6	3	50.0	3	1	-0.4	-0.5
ESA	Uganda	2024-01-08	2024-03-04	12	4	33.3	2	2	100.0	2	2	0.0	0.0
WA	Benin	2024-01-29	2025-02-24	78	33	42.3	5	2	40.0	3	1	0.0	0.0
WA	Burkina Faso	2024-01-01	2025-03-24	238	88	37.0	32	11	34.4	4	2	-0.7	-0.7
WA	Côte d'Ivoire	2024-02-12	2025-02-17	4	3	75.0	2	1	50.0	2	1	0.0	0.0
WA	Ghana	2024-01-01	2025-03-10	145	60	41.4	8	4	50.0	1	1	0.0	0.0
WA	Guinea	2024-01-22	2025-01-13	9	7	77.8	1	1	100.0	1	1	0.0	0.0
WA	Mali	2024-03-04	2024-07-15	3	2	66.7	1	1	100.0	1	1	0.0	0.0
WA	Niger	2024-01-08	2025-03-24	1,885	295	15.6	141	17	12.1	13	1	-0.7	-0.9
WA	Nigeria	2024-01-01	2025-03-24	1,868	344	18.4	211	41	19.4	1	1	-0.9	-0.8
WA	Senegal	2024-01-08	2024-03-25	11	4	36.4	3	1	33.3	3	1	0.0	0.0
WA	Togo	2024-01-29	2025-03-24	57	19	33.3	2	2	100.0	2	2	0.0	0.0
	Total	2024-01-01	2025-03-24	6,380	1,718	26.9	553	139	25.1	73	29	-0.5	-0.5

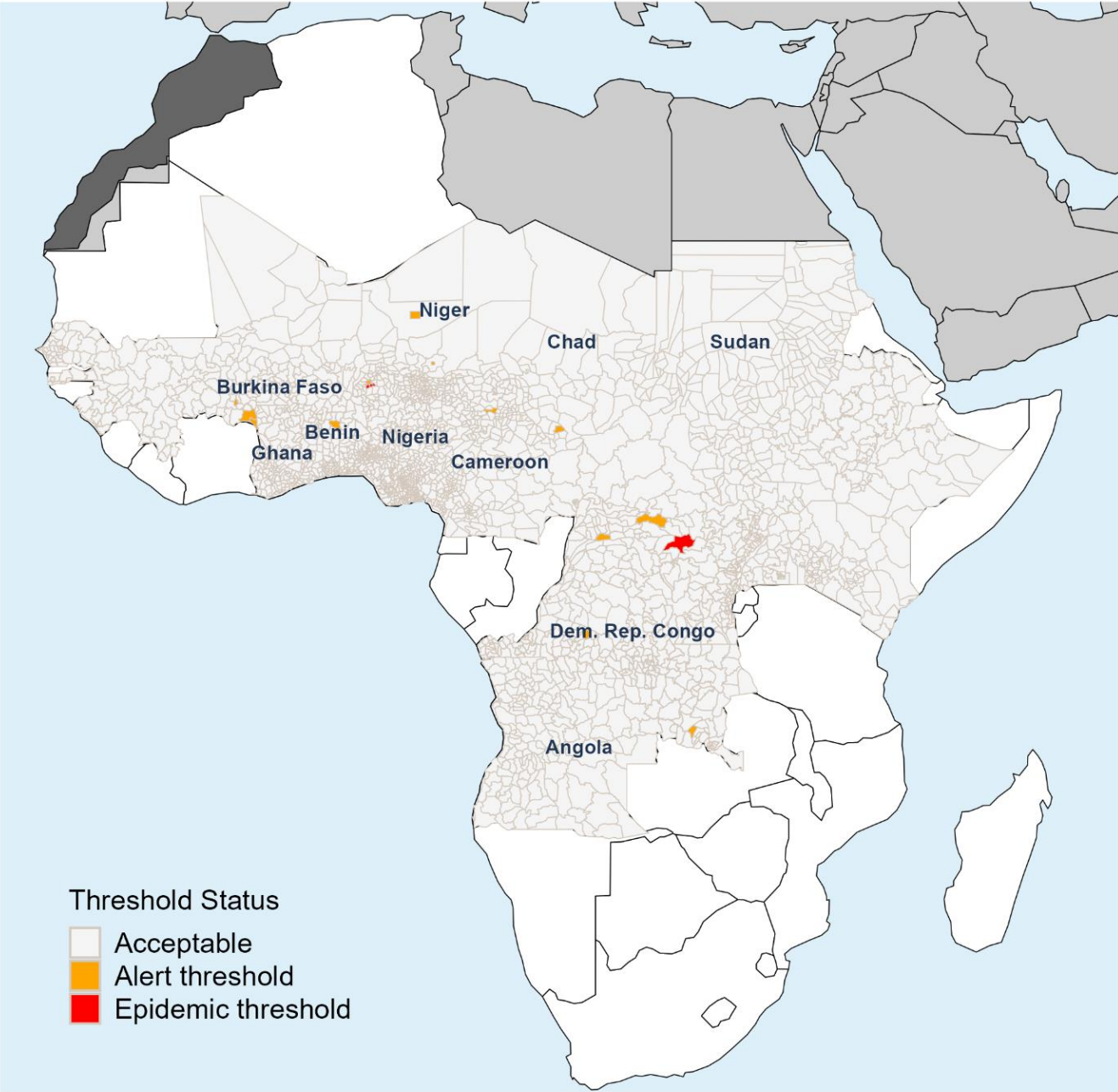
Regional Meningitis Mapping of attack rate per 100,000 population in districts

1 January 2024 to 23 March 2025

Epidemiological Thresholds from week 1, 2025 to last report, by District



Epidemiological Thresholds in Last 28 days by District



Epidemiological Thresholds in Last 7 days by District



The report show 3 side-by-side maps of attack rate of meningitis by different periods in African districts and their countries. The first map show attack rate for cumulative cases in districts from week 1 of 2025 (Nigeria: to last week that was reported (week 12). The second map show attack in last 28 days by districts. The third map show attack rate in last 7 days by district. WHO define Alert threshold if 3 suspected cases per 100,000 population were reported in a week and Epidemic threshold if 10 suspected cases per 100,000 population were reported in a week. Suspected . Some districts are not showing in the map due the small portion that represent in the map.

Regional Meningitis Table of attack rate per 100,000 population in districts

1 January 2024 to 23 March 2025

Districts and threshold status from week 1 January 2025

Country	District	Cases	Attack rate	Threshold status
Togo	Dankpen	26	13.08	Epidemic threshold
Nigeria	Tambuwal	164	41.58	Epidemic threshold
Niger	Maradi C.	68	15.61	Epidemic threshold
Niger	Dogon-Doutchi	64	10.60	Epidemic threshold
Ghana	Nandom	13	22.97	Epidemic threshold
Ghana	Wa Municipal	31	14.01	Epidemic threshold
Ghana	Nadowli-Kaleo	11	12.95	Epidemic threshold
DRC	Banalia	165	155.78	Epidemic threshold
Chad	Goundi	28	11.61	Epidemic threshold
Central African Republic	Batangaf	22	13.75	Epidemic threshold
Nigeria	Gwandu	26	9.64	Alert threshold
Nigeria	Jega	21	6.08	Alert threshold
Nigeria	Askira/Uba	12	4.60	Alert threshold
Nigeria	Matazu	9	4.45	Alert threshold
Nigeria	Maiduguri	20	2.03	Alert threshold
Niger	Zinder	17	3.27	Alert threshold
Niger	Agadez	4	2.23	Alert threshold
Ghana	Wa West	8	7.48	Alert threshold
Ghana	Jirapa	3	2.87	Alert threshold
DRC	Binga	24	6.49	Alert threshold
DRC	Pay-Kongila	5	4.99	Alert threshold
DRC	Makota	9	4.94	Alert threshold
DRC	Buta	8	4.55	Alert threshold
DRC	Ludimbi Lukula	6	4.50	Alert threshold
DRC	Likati	3	4.49	Alert threshold
DRC	Businga	6	3.63	Alert threshold
DRC	Pendjwa	4	3.43	Alert threshold
DRC	Kiri	5	3.26	Alert threshold
DRC	Mweka	10	2.88	Alert threshold
DRC	Katoka	5	2.88	Alert threshold
DRC	Bunkonde	4	2.65	Alert threshold
DRC	Fungurume	2	2.49	Alert threshold
DRC	Walikale	5	2.41	Alert threshold
DRC	Gemena	5	2.25	Alert threshold
DRC	Limete	8	2.21	Alert threshold
DRC	Ndeksha	5	2.20	Alert threshold
DRC	Kimputu	3	2.07	Alert threshold
Chad	Goundi	9	4.66	Alert threshold
Cameroon	Mbandjock	3	4.65	Alert threshold
Burkina Faso	Gaoua	10	3.57	Alert threshold
Burkina Faso	Bogandï	18	3.55	Alert threshold
Burkina Faso	Karangasso Viguï	5	3.41	Alert threshold
Burkina Faso	Batie	3	2.58	Alert threshold
Burkina Faso	Dafra	12	2.31	Alert threshold
Burkina Faso	Ouahigouya	10	2.19	Alert threshold
Benin	Cotonou Vi	6	2.37	Alert threshold
Benin	N'dali	3	2.10	Alert threshold
Angola	Baia Farta	5	3.76	Alert threshold

Districts and threshold status last 28 days

Country	District	Cases	Attack rate	Threshold status
Nigeria	Tambuwal	164	41.58	Epidemic threshold
Niger	Maradi C.	47	10.79	Epidemic threshold
Niger	Dogon-Doutchi	64	10.60	Epidemic threshold
DRC	Banalia	47	44.37	Epidemic threshold
Nigeria	Gwandu	25	9.27	Alert threshold
Nigeria	Askira/Uba	10	3.84	Alert threshold
Nigeria	Maiduguri	20	2.03	Alert threshold
Niger	Zinder	12	2.31	Alert threshold
Niger	Agadez	4	2.23	Alert threshold
Ghana	Nandom	2	3.53	Alert threshold
DRC	Likati	3	4.49	Alert threshold
DRC	Fungurume	2	2.49	Alert threshold
DRC	Binga	8	2.16	Alert threshold
DRC	Kimputu	3	2.07	Alert threshold
Chad	Goundi	6	2.49	Alert threshold
Central African Republic	Batangaf	12	7.50	Alert threshold
Burkina Faso	Bogandï	18	3.55	Alert threshold
Burkina Faso	Karangasso Viguï	5	3.41	Alert threshold
Burkina Faso	Gaoua	8	2.86	Alert threshold
Burkina Faso	Batie	3	2.58	Alert threshold
Burkina Faso	Dafra	12	2.31	Alert threshold
Benin	N'dali	3	2.10	Alert threshold

Districts and threshold status last 7 days

Country	District	Cases	Attack rate	Threshold status
Niger	Maradi C.	13	2.99	Alert threshold
DRC	Banalia	7	6.61	Alert threshold
Burkina Faso	Batie	3	2.58	Alert threshold

The visuals show 3 side-by-side table of attack rate of meningitis by different periods in African districts and their countries. The first table show total of district attack rate for cumulative cases in districts from week 1 of 2025 (Nigeria: to last week that was reported (week 12)). The second map show attack in last 28 days by districts. The third map show attack rate in last 7 days by district. WHO define Alert threshold if 3 suspected cases per 100,000 population were reported in a week and Epidemic threshold if 10 suspected cases per 100,000 population were reported in a week. Suspected .

Meningitis Countries and District Risk Assessment

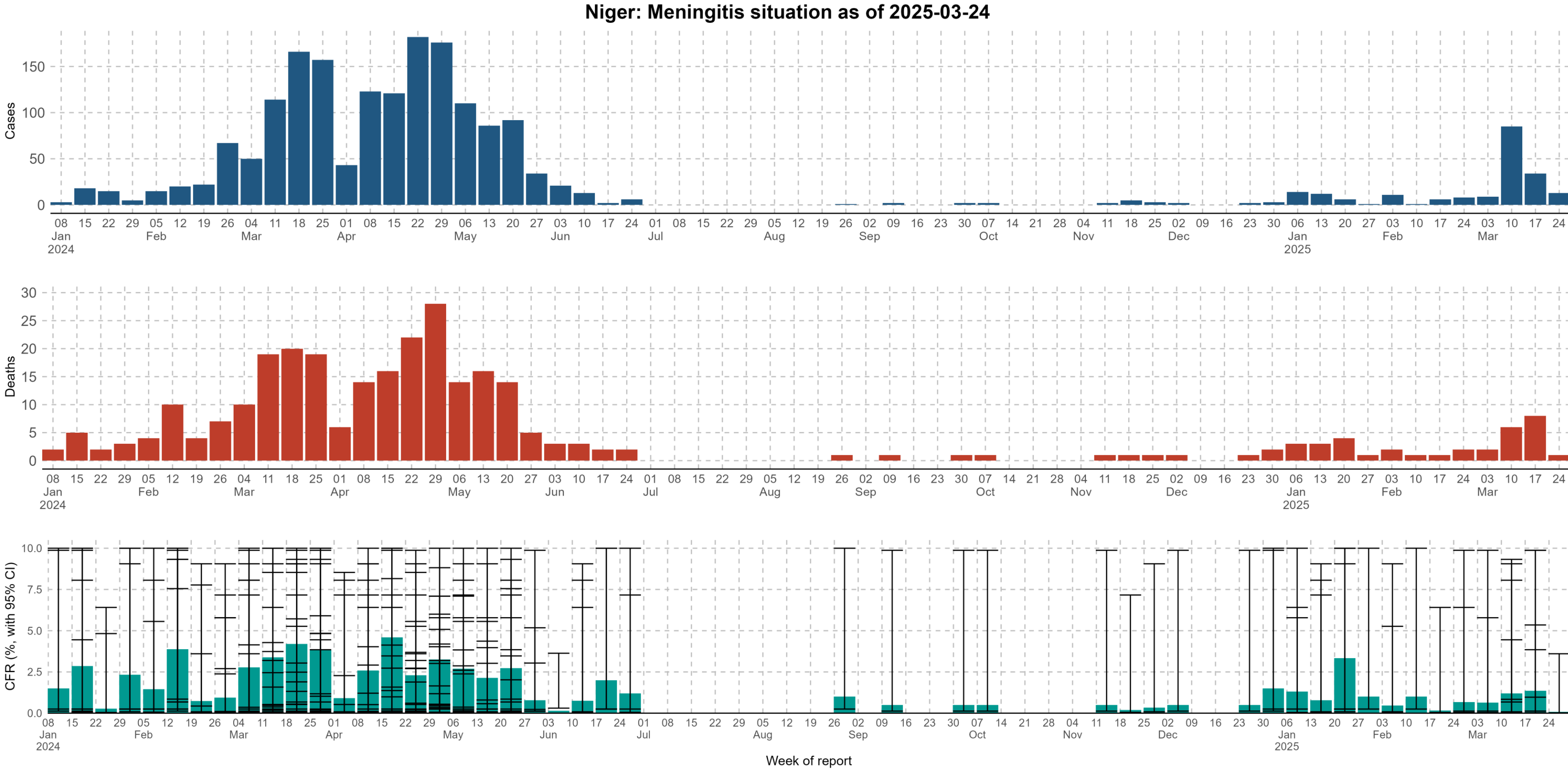
1 January 2024 to 23 March 2025

Country	District	Risk Assessment	Country	District	Risk Assessment	Country	District	Risk Assessment	Country	District	Risk Assessment
Niger	Niamey	Very High	Niger	Agadez	High	Niger	Maradi	Moderate	Niger	Diffa	Low
Nigeria	Bauchi	Very High	Niger	Dosso	High	Niger	Tahoua	Moderate	Nigeria	Abia	Low
Nigeria	Gombe	Very High	Niger	Zinder	High	Niger	Tillaberi	Moderate	Nigeria	Akwa Ibom	Low
Nigeria	Jigawa	Very High	Nigeria	Adamawa	High	Nigeria	Bayelsa	Moderate	Nigeria	Anambra	Low
Nigeria	Katsina	Very High	Nigeria	Borno	High	Nigeria	Benue	Moderate	Nigeria	Edo	Low
Nigeria	Kebbi	Very High	Nigeria	Cross River	High	Nigeria	Delta	Moderate	Nigeria	Ekiti	Low
Nigeria	Sokoto	Very High	Nigeria	Ebonyi	High	Nigeria	Kaduna	Moderate	Nigeria	Enugu	Low
Nigeria	Yobe	Very High	Nigeria	FCT	High	Nigeria	Kano	Moderate	Nigeria	Kogi	Low
Nigeria	Zamfara	Very High	Nigeria	Niger	High	Nigeria	Lagos	Moderate	Nigeria	Kwara	Low
Ghana	Upper West	Very High	Nigeria	Plateau	High	Nigeria	Nasarawa	Moderate	Nigeria	Imo	Low
Ghana	North East	Very High	Nigeria	Taraba	High	Nigeria	Osun	Moderate	Nigeria	Ogun	Low
Ghana	Upper East	Very High	Ghana	Bono	High	Nigeria	Oyo	Moderate	Nigeria	Ondo	Low
Mali	Bamako	Very High	Ghana	Savannah	High	Ghana	Eastern	Moderate	Nigeria	Rivers	Low
Mali	Koulikoro	Very High	Ghana	Bono East	High	Ghana	Ahafo	Moderate	Ghana	Western	Low
Burkina Faso	Sud-Ouest	Very High	Ghana	Northern	High	Ghana	Oti	Moderate	Ghana	Western North	Low
Burkina Faso	Centre Sud	Very High	Mali	Sikasso	High	Ghana	Ashanti	Moderate	Mali	Kayes	Low
Chad	Mandoul	Very High	Burkina Faso	Boucle du Mouhoun	High	Ghana	Central	Moderate	Mali	Kidal	Low
Chad	Salamat	Very High	Burkina Faso	Cascades	High	Ghana	Greater Accra	Moderate	Mali	Mopti	Low
Chad	Moyen-Chari	Very High	Burkina Faso	Plateau Central	High	Ghana	Volta	Moderate	Mali	Ségou	Low
Chad	Mayo-Kebbi Ouest	Very High	Burkina Faso	Hauts-Bassins	High	Mali	Gao	Moderate	Mali	Tombouctou	Low
Togo	Kara	Very High	Chad	Batha	High	Mali	Menaka	Moderate	Mali	Taoudenni	Low
			Chad	Logone Oriental	High	Burkina Faso	Centre-Est	Moderate	Burkina Faso	Centre	Low
			Chad	Hadjer Lamis	High	Burkina Faso	Nord	Moderate	Burkina Faso	Sahel	Low
			Chad	Ouaddai	High	Burkina Faso	Centre-Nord	Moderate	Burkina Faso	Centre-Ouest	Low
			Chad	Tandjile	High	Burkina Faso	Est	Moderate	Chad	Barh-El-Gazel	Low
			Togo	Savanes	High	Chad	Ndjamena	Moderate	Chad	Guera	Low
			Togo	Centrale	High	Chad	Logone Occidental	Moderate	Chad	Kanem	Low
						Chad	Mayo-Kebbi Est	Moderate	Chad	Lac	Low
						Chad	Chari-Baguirmi	Moderate	Chad	Sila	Low
						Togo	Plateaux	Moderate	Chad	Wadi Fira	Low
						Togo	Grand Lome	Moderate	Chad	Borkou	Low
									Chad	Ennedi Est	Low
									Chad	Ennedi Ouest	Low
									Chad	Tibesti	Low
									Togo	Maritime	Low

In July 2023, the multivalent meningococcal conjugate vaccine ACWXY (Men5CV) was prequalified by the WHO. In October 2023, the Strategic Advisory Group of Experts on Immunization (SAGE) recommends that all countries in the African meningitis belt introduce Men5CV into their routine immunization programs, and in high-risk countries, and countries with high-risk districts, it is essential to conduct a one-off mass preventive campaign with Men5CV at the time of the introduction of the vaccine. In line with the SAGE recommendation, five countries in the African meningitis belt conducted the meningitis risk assessment from August 2024 to January 2025. These countries are Nigeria, Niger, Ghana, Mali, Burkina Faso, and Chad. These assessments were carried out using the meningitis risk assessment tool also called MenRAT. The level of meningitis risk was estimated using three quantitative indicators: magnitude (disease burden), the disease intensity and the frequency of epidemics. The ranking with the MenRAT was done first at district level then at the regional level for the planning of campaigns

Niger: Weekly Epicurve of Suspected or Probable Meningitis cases.

1 January 2024 to 23 March 2025

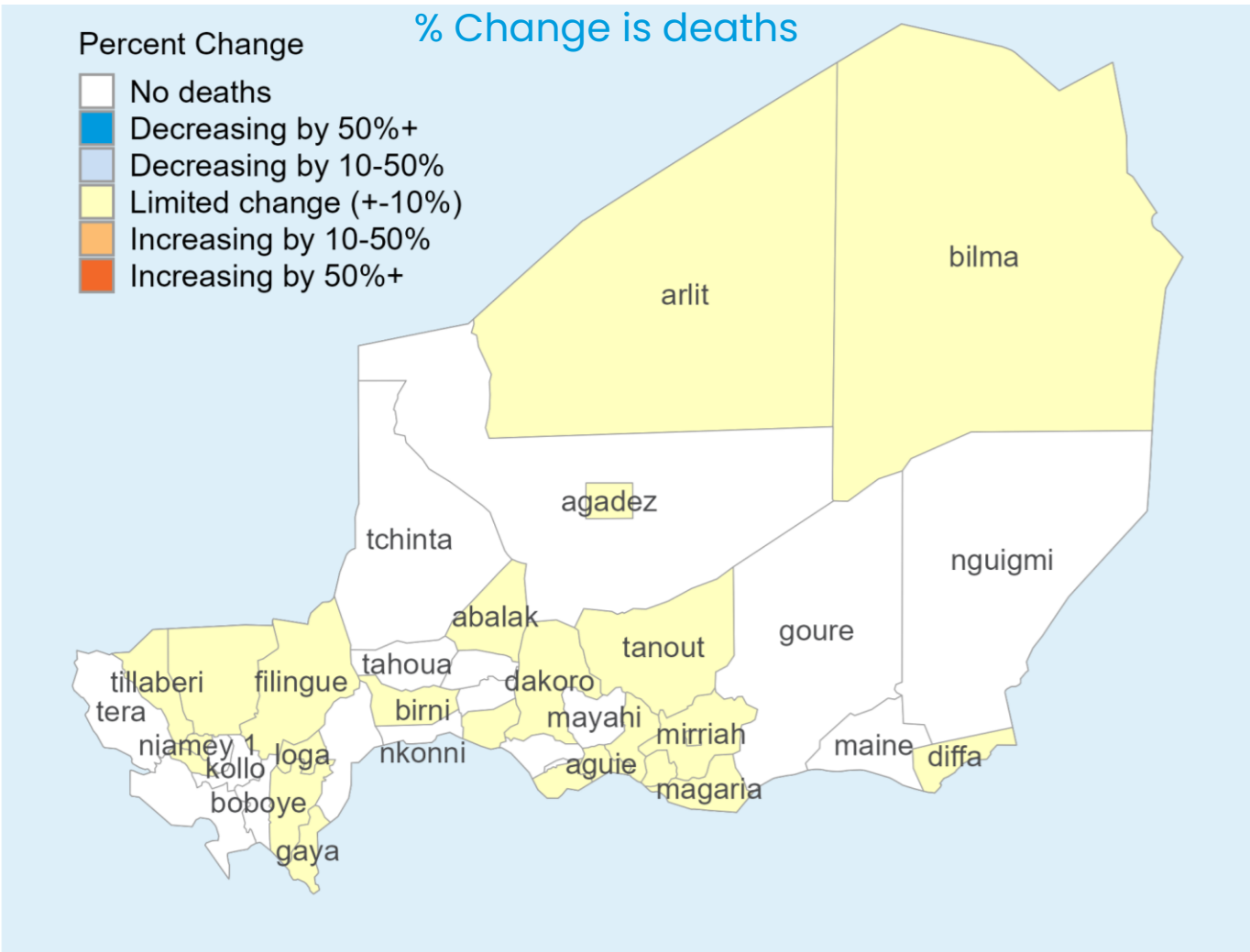
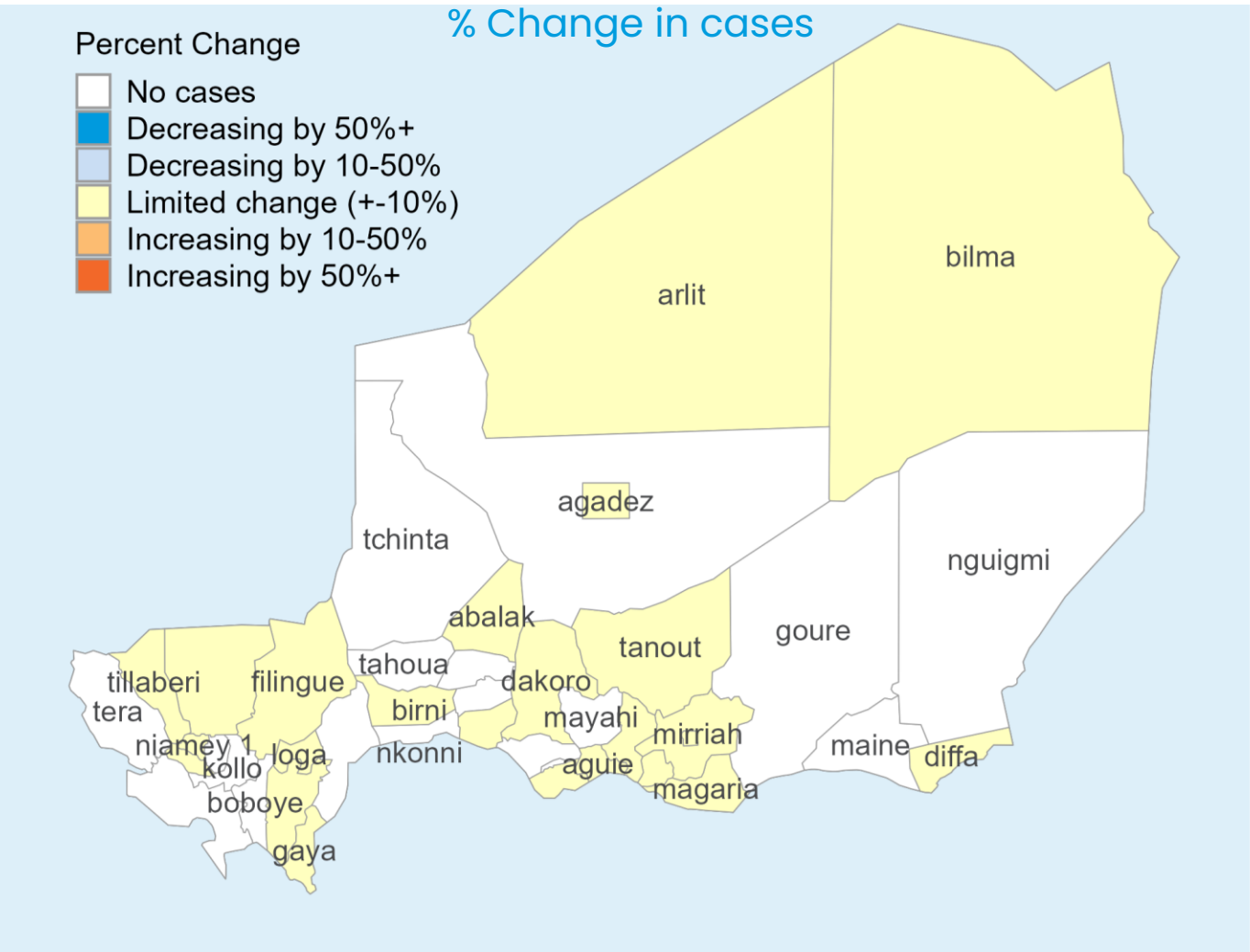
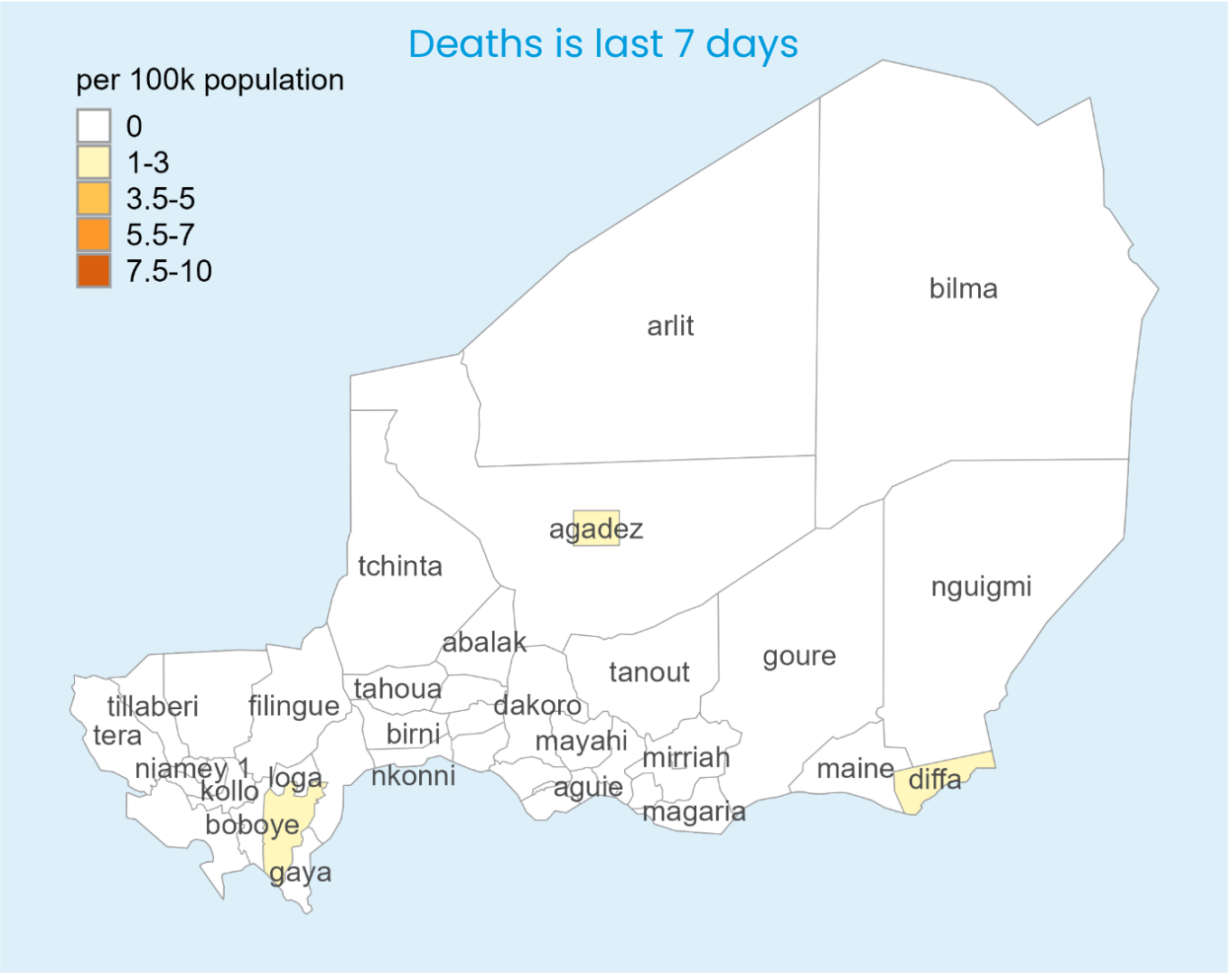
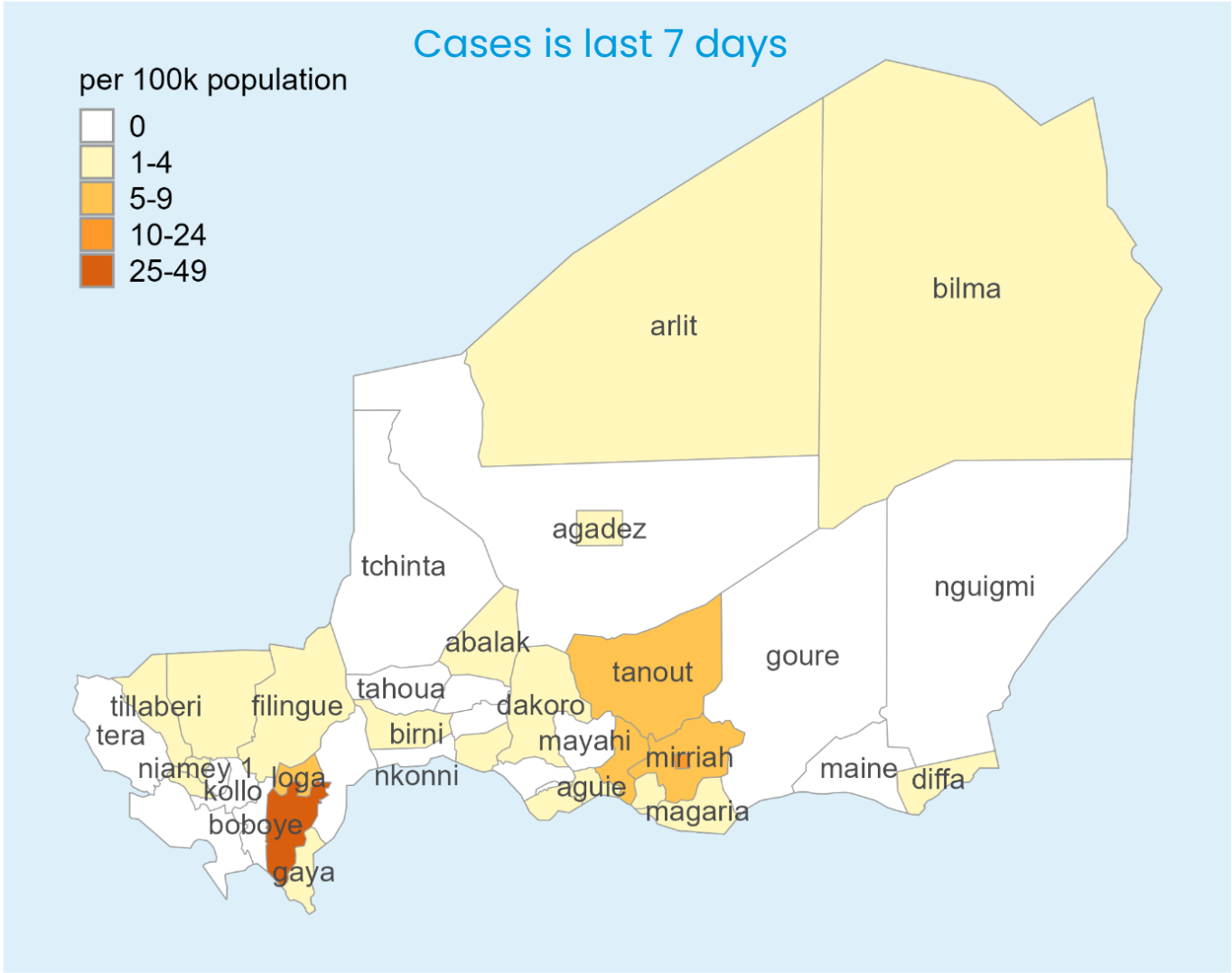


CFR shown for cases with 10+ cases and 1+ death

Niger:

Report cases and deaths in last week by district

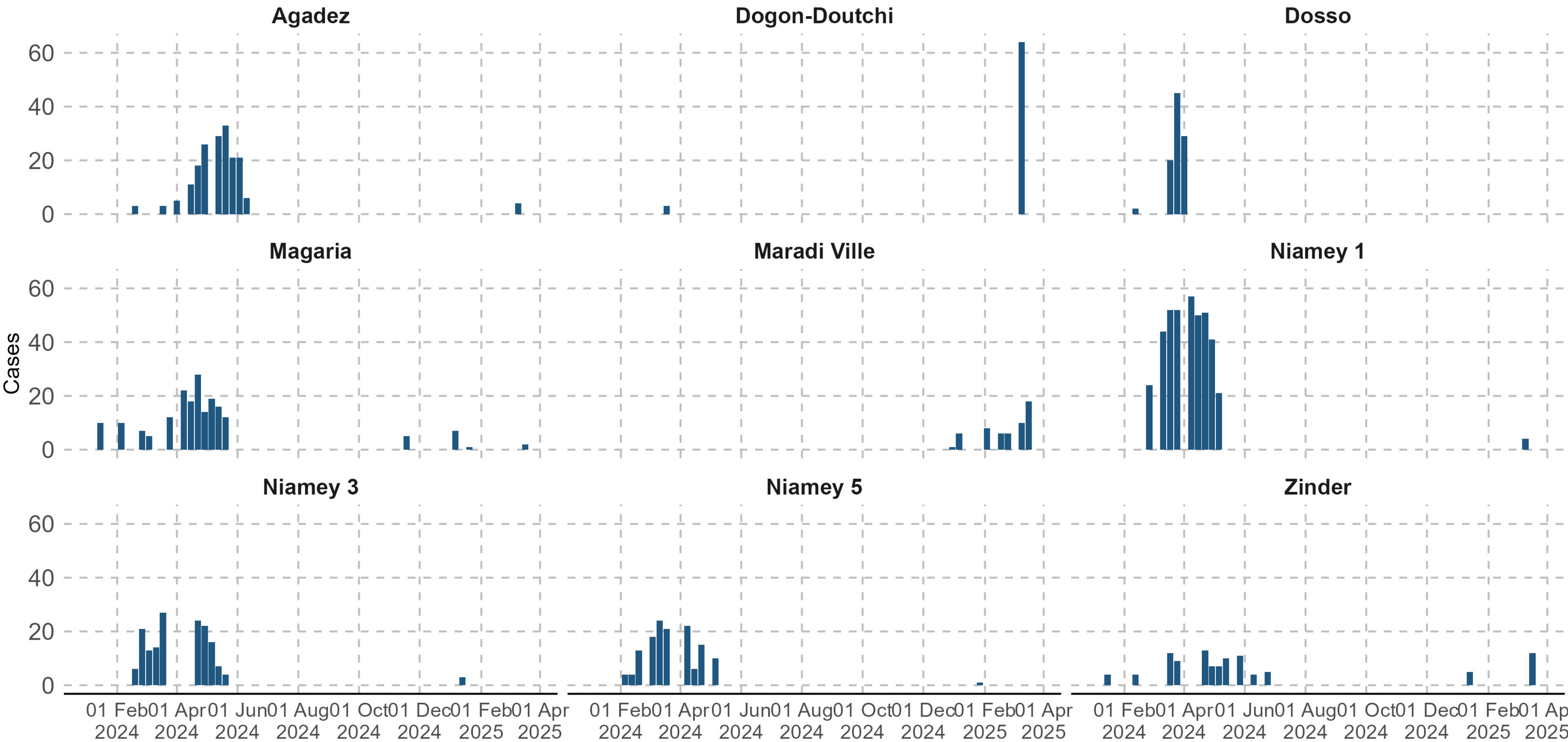
(Report between 17 Mar – 23 Mar 2025)



Percent change is defined as the change between cases or deaths recorded from 10 – 16 March with those recorded 17 – 23 March. Percent change could not be calculated if either week had no reported cases or deaths.

Niger: Weekly Epicurve of Meningitis cases by districts

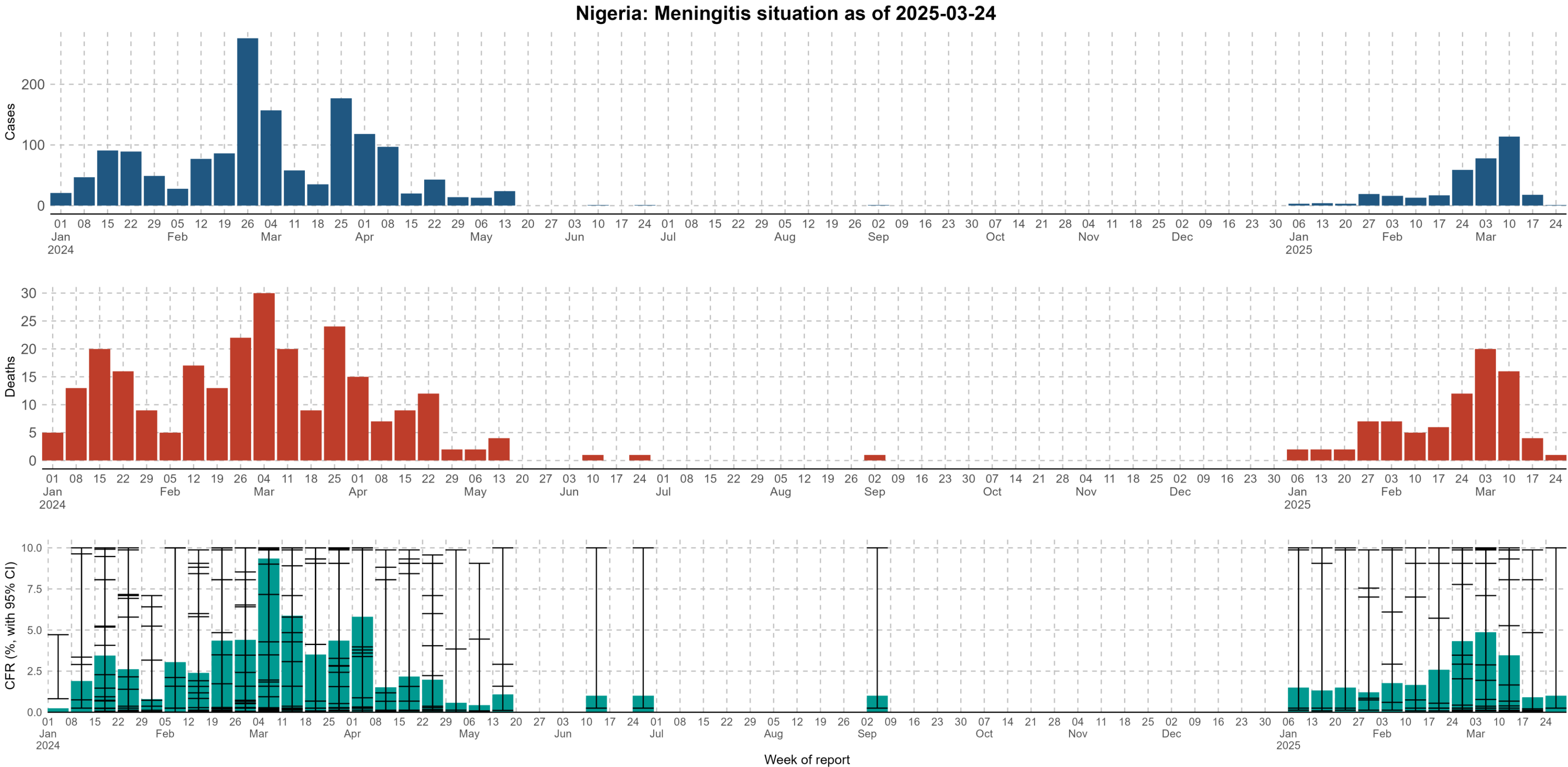
1 January 2024 to 23 March 2025 (Top 9 high district)



Notes: Based on data received 2025-01 - Surveillance data from 2023-12 to 2025-01 - Incidence: Number of cases / population * 1,000,000 - Population data: World population prospects, 2019 revision - UCN Data Portal: dataportal.afro.who.int

Nigeria: Weekly Epicurve of Suspected or Probable Meningitis cases.

1 January 2024 to 23 March 2025

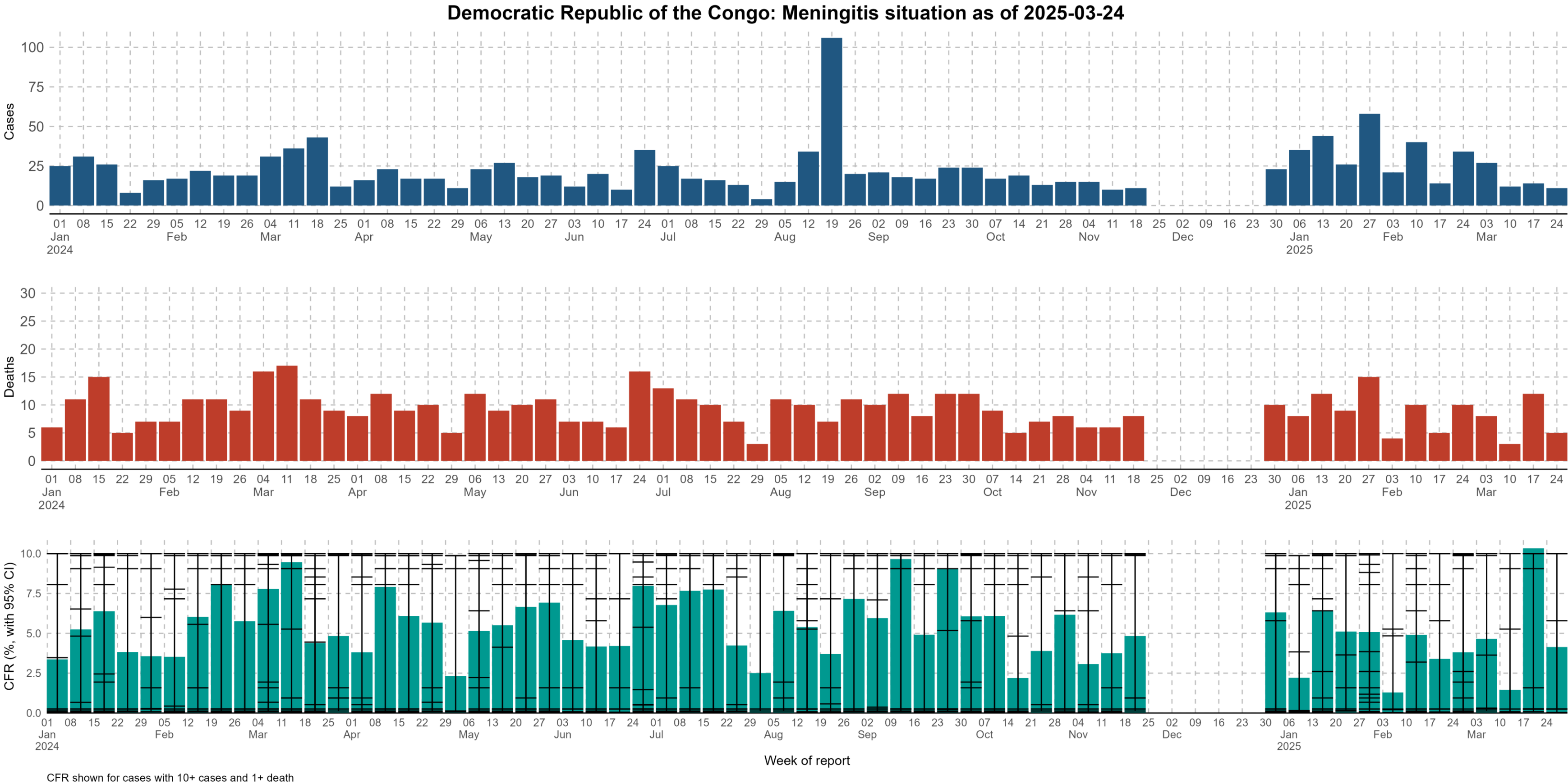


CFR shown for cases with 10+ cases and 1+ death

Democratic Republic of the Congo:

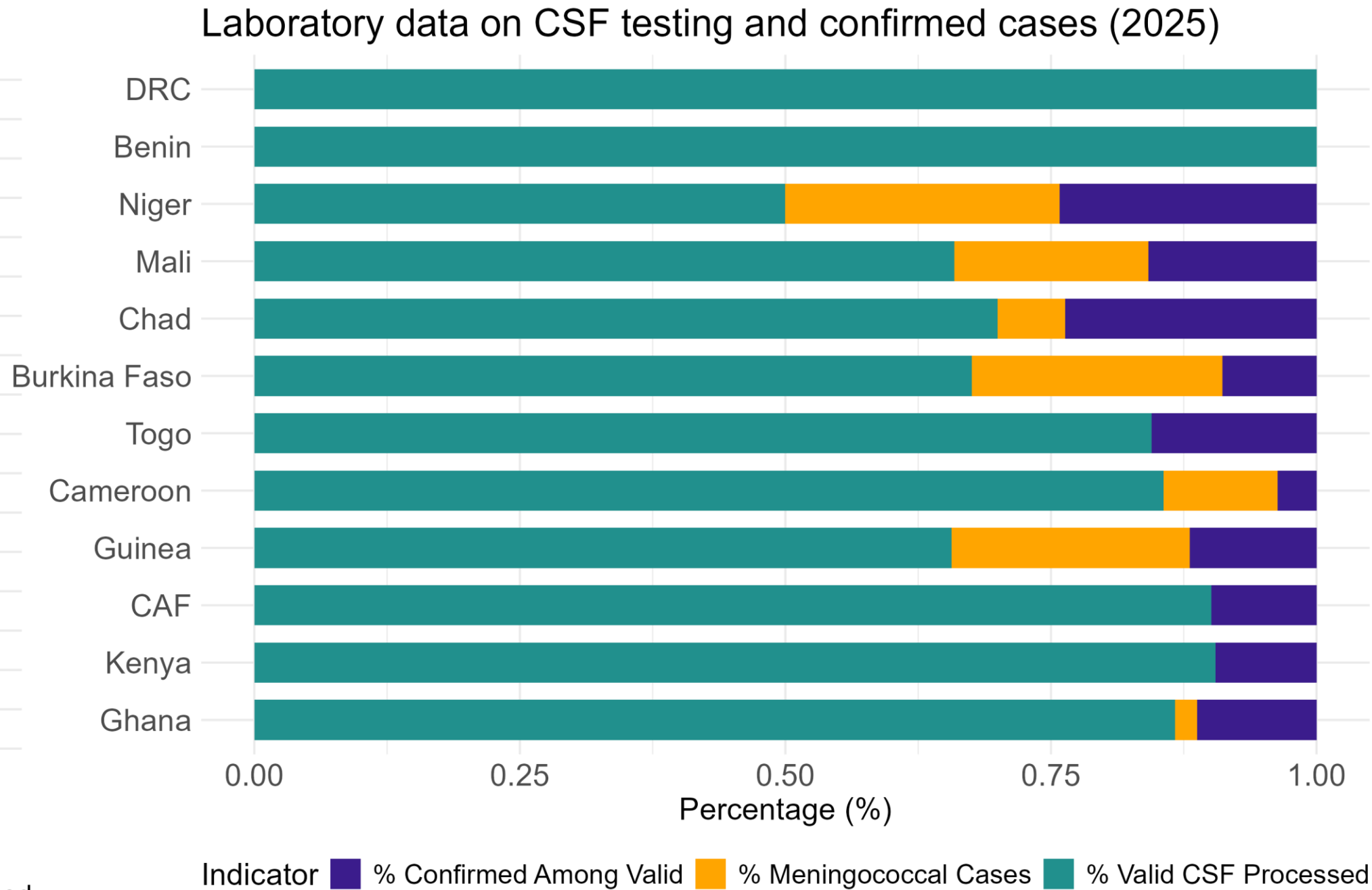
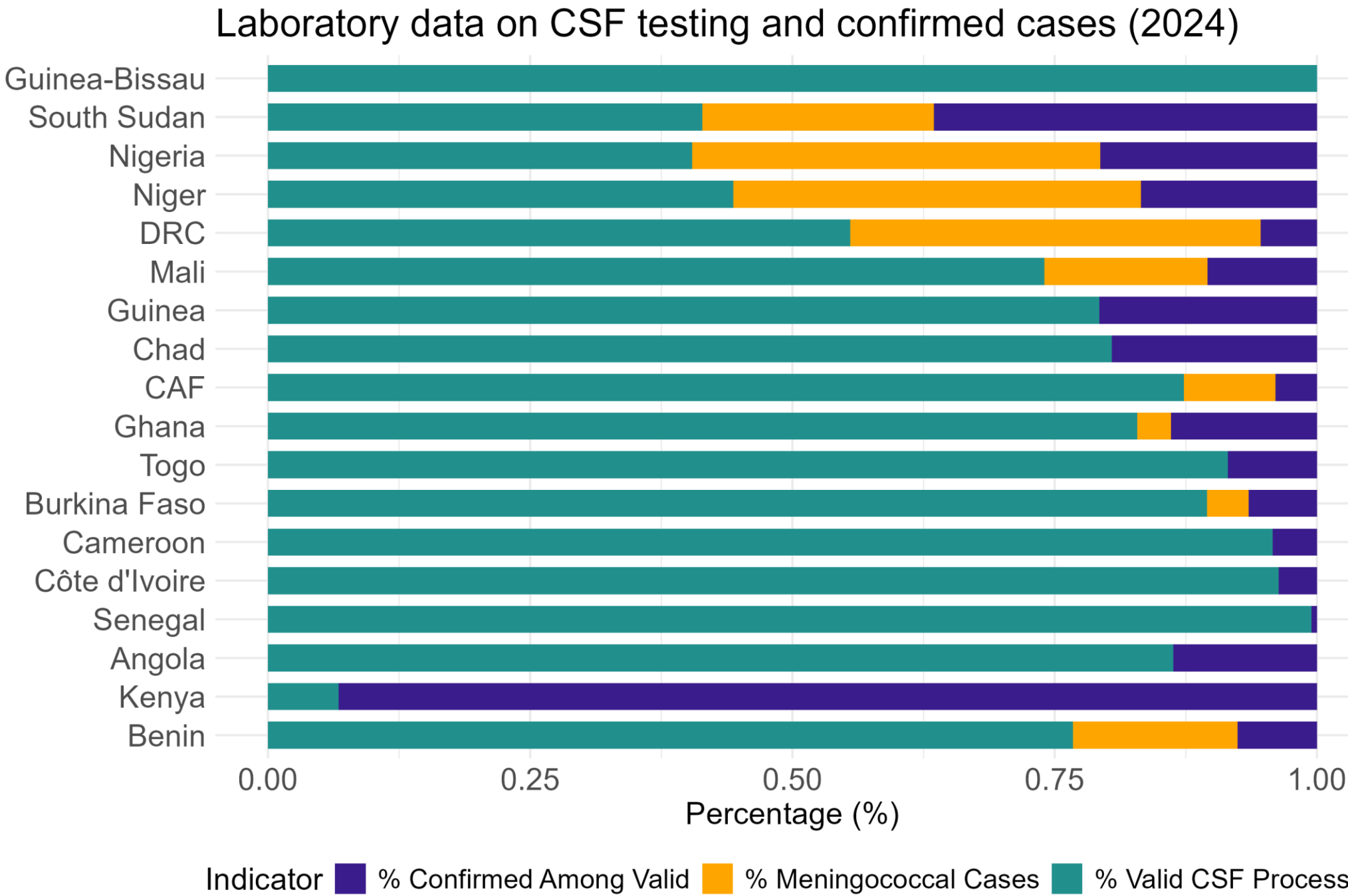
Weekly Epicurve of Suspected or Probable Meningitis cases.

1 January 2024 to 23 March 2025



Meningitis Laboratory Indicators by country

1 January 2024 to 23 March 2025



Meningitis: Summary of laboratory-confirmed meningitis data by country, focusing on CSF sample testing and bacterial identification.

2025

Country	Samples					Confirmed Cases				
	Total CSF samples collected	Valid CSF samples processed	Contaminated CSF samples	CSF samples tested negative	Still being processed in the lab	Neisseria meningitidis	Streptococcus pneumoniae	Haemophilus influenzae b	Group B Streptococcus	Other bacterial cases
Benin	42	42	0		42	0				0
Burkina Faso	581	554	0	485	0	23	41	2	0	3
Cameroon	188	188	0	180	0	1	0	1	0	6
CAF	155	155	7	131	0	0	16	0	0	1
Ghana	376	357	0	310	3	1	42	0	0	1
Guinea	41	30	0	26	0	1	3	0	0	0
Kenya	19	19	1	16	0	0	0	0	0	2
Mali	196	196	0	149	0	13	18	1	0	15
Niger	184	184	0	95	0	46	25	0	0	18
DRC	73	73	0	70	3	0	0	0	0	0
Chad	65	65	0	41	2	2	18	0	0	2
Togo	206	206	0	168	0	0	36	2	0	0

2024

Country	Samples					Confirmed Cases				
	Total CSF samples collected	Valid CSF samples processed	Contaminated CSF samples	CSF samples tested negative	Still being processed in the lab	Neisseria meningitidis	Streptococcus pneumoniae	Haemophilus influenzae b	Group B Streptococcus	Other bacterial cases
Angola	130	99	0	87	0	0	1	0	2	9
Benin	2,188	1,286	0	1,211	0	9	35	23	0	8
Burkina Faso	1,666	1,623	1	1,507	0	5	89	3	0	18
Cameroon	586	586	0	560	0	0	3	0	0	23
CAF	660	660	17	613	0	3	10	1	0	16
Côte d'Ivoire	238	238	0	227	2	0	6	3	0	0
Ghana	545	516	2	431	1	3	78	1	0	0
Guinea	130	130	0	96	0	0	28	0	0	6
Guinea-Bissau	1	1	0	1	0	0	0	0	0	0
Kenya	2,876	150	42	0	0	0	62	0	0	46
Mali	707	707	0	607	0	21	46	1	0	32
Niger	3,681	3,681	0	2,290	0	1,219	146	0	0	26
Nigeria	264	246	0	97	32	105	3	9	0	0
DRC	278	273	0	242	5	18	5	1	0	2
Senegal	184	184	0	2	181	0	1	0	0	0
South Sudan	17	17	0	2	0	8	3	0	1	3
Chad	111	111	0	84	0	0	24	3	0	0
Togo	669	669	0	607	0	0	56	6	0	0

@ WHO Regional Office for Africa

Correspondence on this publication may be directed to:

Dr. Benido Impouma – Director, Communicable and Non-communicable Disease Cluster
WHO AFRO Communicable and Noncommunicable Cluster
P O Box. 06 Cite de Djoué, Brazzaville, Congo
Email: pph@who.int

Request to permission to reproduce or translate this publication – whether for site or for non-commercial distribution – should be sent to the same address.